

# 長寿命・メンテナンスフリー一定電圧変圧器

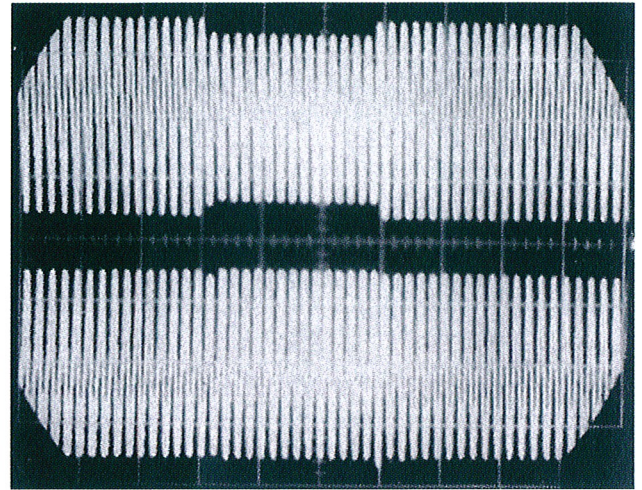
## Long Life & Maintenance Free CONSTANT VOLTAGE TRANSFORMER

独自の回路による優れたフィルター効果  
Excellent L/C Filter with original circuit

矩形波も正弦波に補正 Perfect Sinewave

### 仕様 (Specifications)

周波数 Frequency	50Hz or 60Hz
入力電圧範囲 Input Voltage Range	定格電圧の85~110% 85~110% of rated voltage
出力電圧精度 Output Voltage Accuracy	定格電圧 $\pm 2\%$ Rated Voltage $\pm 2\%$
出力電圧偏差 Output Voltage Deviation	定格電圧 $\pm 2\%$ Rated Voltage $\pm 2\%$
波形歪率 Waveform Distortion	5%以下 less than 5%
効率 Conversion Efficiency	85%以上 better than 85%
使用温度 Operating Temp. Range	- 10 ~ 40°C



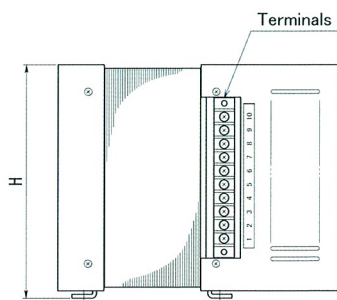
用途：電圧変動の大きく装置が誤作動するような場所 (Use: The best to be used where large voltage fluctuation)

Capacity[VA]	Model	W	H	L	B	a	b	c1	c2	d	Weight[kg]
100	AV-100F-□	115	174	169	142	60	130	21	88	5*10	8
150	AV-150F-□	115	174	182	142	73	130	21	88	5*10	10
200	AV-200F-□	115	174	197	142	88	130	21	88	5*10	11
300	AV-300F-□	115	174	223	142	114	130	21	88	5*10	13
400	AV-400F-□	143	190	217	170	98	156	22	97	5.5*10	16
500	AV-500F-□	143	190	231	170	112	156	22	97	5.5*10	19
750	AV-750F-□	143	190	337	170	143	156	97	97	5.5*10	25
1K	AV-1KF-□	143	190	357	170	163	156	97	97	5.5*10	31

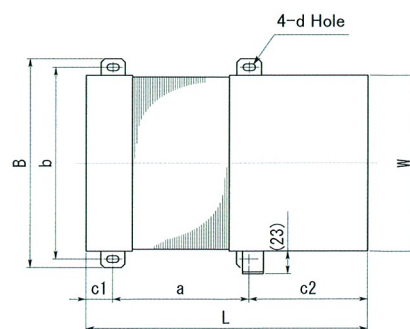
型式の末尾空欄の数字は定電圧変圧器と同じです。

Voltage options (last digits of model name) : see stabilized ac power supplies.

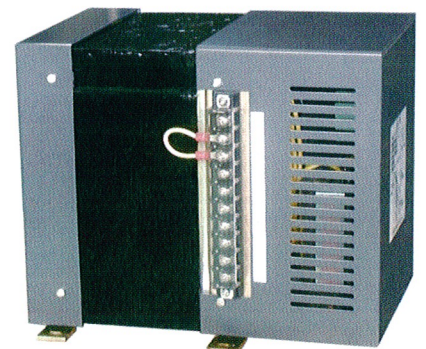
特殊仕様の製作も可能です。 (The production with the special spec. is also possible.)



Side View



Top View





# 長寿命・メンテナンスフリーの交流安定化電源

## Long Life & Maintenance Free STABILIZED AC POWER SUPPLY

### 独自の回路による優れたフィルター効果

### Excellent L/C Filter with original circuit

#### 仕様 (Specifications)



周波数 Frequency	50Hz or 60Hz	波形歪率 Waveform Distortion	5%以下 less than 5%
入力電圧範囲 Input Voltage Range	定格電圧の85~110% 85~110% of rated voltage	効率 Conversion Efficiency	85%以上 better than 85%
出力電圧精度 Output Voltage Accuracy	定格電圧±2% Rated Voltage ±2%	使用温度 Operating Temp. Range	- 10 ~ 40°C
出力電圧偏差 Output Voltage Deviation	定格電圧±2% Rated Voltage ±2%		

★出力コンセントは海外用に変更可能。★ Overseas Output Sockets available on request

Capacity[VA]	Model	W[mm]	H[mm]	D[mm]	Appearance	Weight[kg]
300	AG-300F-□	170	200	360	Fig.1	20
500	AG-500F-□	170	200	360	Fig.1	26
750	AG-750F-□	170	200	360	Fig.1	33
1K	AG-1KF-□	170	200	410	Fig.1	39
1.5K	AG-1.5KF-□	280	210	390	Fig.1	48
2K	AG-2KF-□	420	249	500	Fig.2	65
3K	AG-3KF-□	350	670	450	Fig.3	120
4K	AG-4KF-□	400	770	550	Fig.3	150
5K	AG-5KF-□	400	770	550	Fig.3	180

型式の末尾空欄の数字は次の数字が入ります。数字は定格電圧変換器と同じです。 Voltage options (last digits of model name)

型式の末尾空欄の数字は次の数字が入ります。

- 1 : 入力電圧 100V 出力電圧 100V
- 2 : 入力電圧 200V 出力電圧 200V
- 21 : 入力電圧 200V 出力電圧 100V
- 12 : 入力電圧 100V 出力電圧 200V

ご希望の電圧も製作可能

Voltage options (last digits of model name)

- 1 : Input Voltage 100V Output Voltage 100V
- 2 : Input Voltage 200V Output Voltage 200V
- 21 : Input Voltage 200V Output Voltage 100V
- 12 : Input Voltage 100V Output Voltage 200V

Different voltage also possible on request

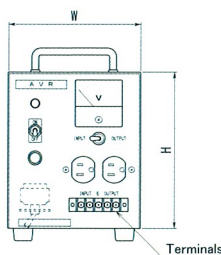


Fig.1

•The form of the handle varies in the capacity.  
•1.5kVA Input Switch—Circuit Breaker

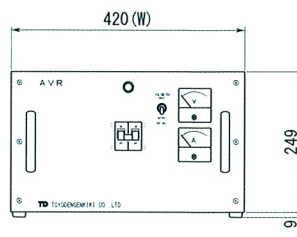
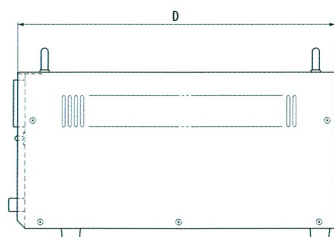


Fig.2

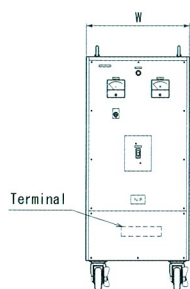
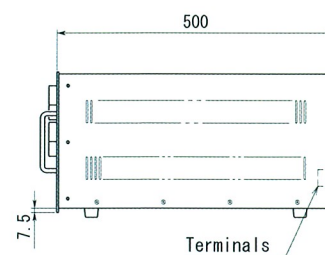
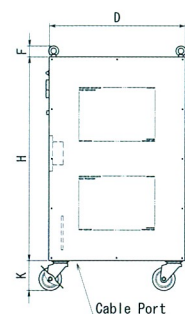


Fig.3



### 優れたフィルター効果

### Excellent L/C Filter

電圧変動の大きい場所に最適

The best to be used where large voltage fluctuation



**東洋電源機器株式会社**  
TOYODENGENKIKI CO.,LTD.

<http://toyodengenkiki.co.jp>

〒223-0057 横浜市港北区新羽町 2306  
TEL 045-543-1002 (代表) FAX 045-546-1479  
2306 Nippa-cho, Kohoku-ku, 223-0057 JAPAN  
Tel.+81-45-543-1002 Fax.+81-45-546-1479  
E-mail: info@toyodengenkiki.co.jp